



---

## MODULE ONE: BASICS

Participant Guide  
spatialNET Standard Users Workbook  
January 4, 2012  
Version 1.2  
Brad Simpson

Topic	Page
Introduction	3
Creating and Selecting Jobs	5
Job Creation	6
Finding spatialNET Objects	7
Pessimistic Locking	8
Screen Layout and Toolbar Setup	9
Symbol Search Paths	10
AutoCAD Objects	11
View Templates	12
View Settings, AutoCAD Layers and AutoCAD Objects	13
Zoom Levels	14
General Toolbar Functions	15
Learning Moments	16

## OVERVIEW:

This module provides an overview of the general navigation and processes to start using spatialNET.

## OBJECTIVES:

By completing this module, participants will be able to:

- Find different entities using the various find options.
- Open jobs assigned by spatialNET administrators.
- Overcome pessimistic locking issues and warning messages.
- Setup and configuration of the spatialNET workspace.
- Navigating spatialNET view settings including templates, AutoCAD layers and CAD filtering.

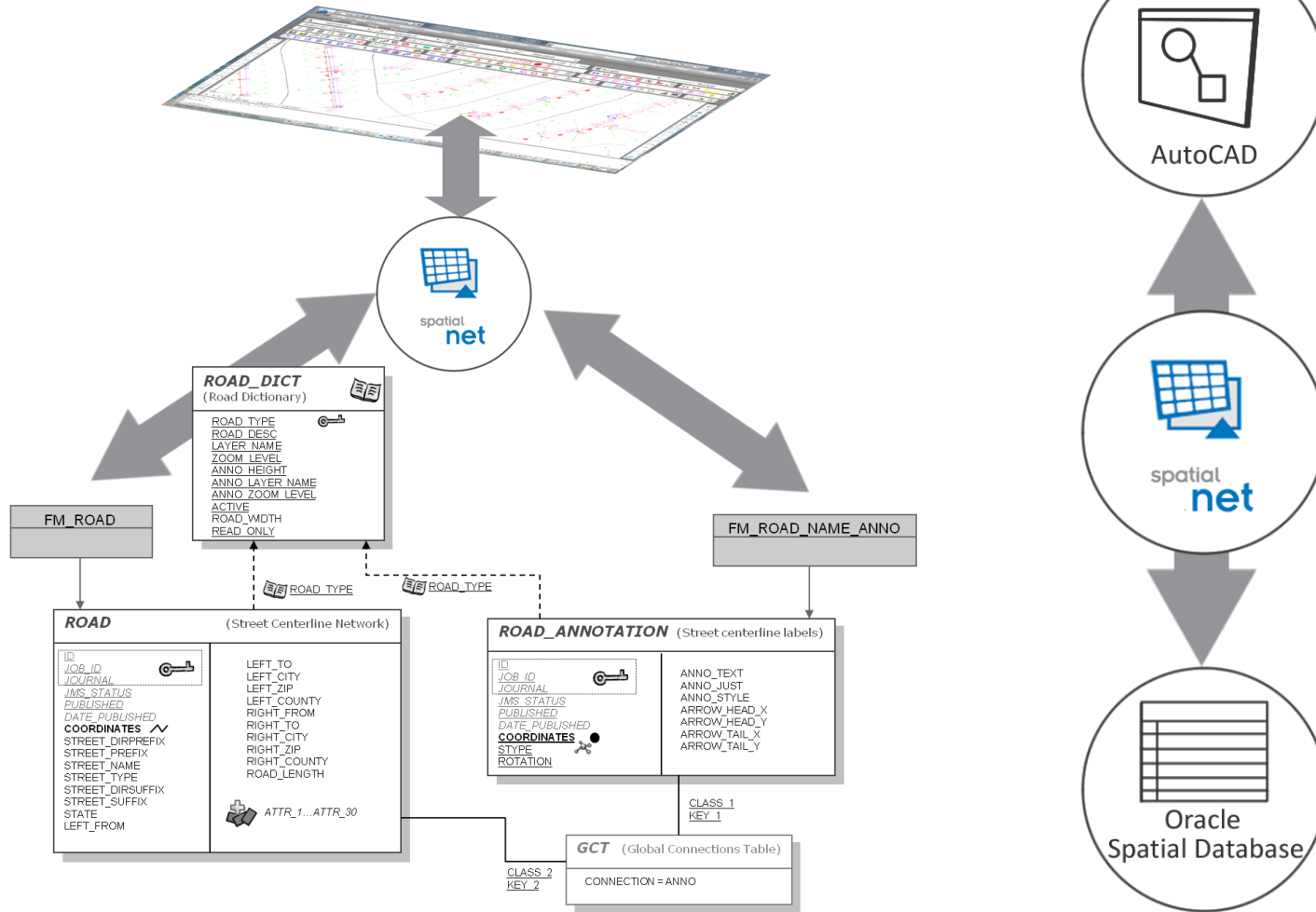
---

## NOTES:

# INTRODUCTION

## What is spatialNET?

spatialNET is a network design and management tool that helps network engineers design and manage fiber, coax, copper and utility networks. spatialNET uses AutoCAD for visualization, and the actual geospatial location and behavior is controlled by spatialNET. Modeled objects and associated attributes are saved in an Oracle Spatial database and linked through spatialNET.



# NOTES

## INTRODUCTION

## NOTES

### Logging into spatialNET

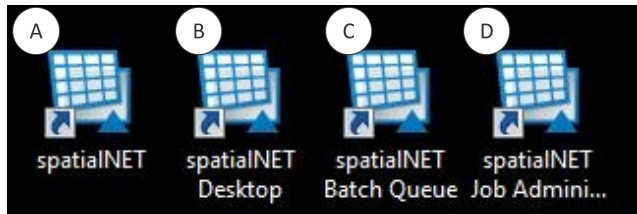
The process to log into spatialNET is very straightforward. Access the Documentation site for more information.

#### Login Process

- 1.
- 2.

There are other spatialNET applications available for users. These may not be used by all standard users, but it is important to be aware of the differences.

#### What are the differences?



A

C

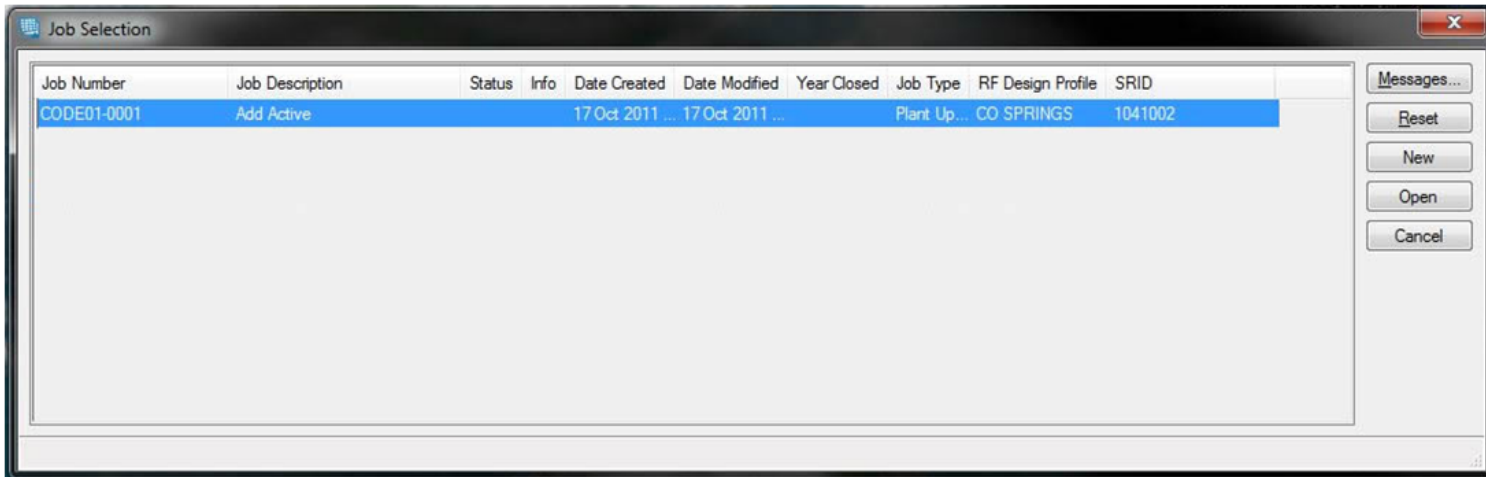
B

D

Notes:

## CREATING AND SELECTING JOBS

Jobs will be created by spatialNET users when logging into the system. Before starting the job, confirm the Description, Job Type, and the RF Design Profile.



## NOTES

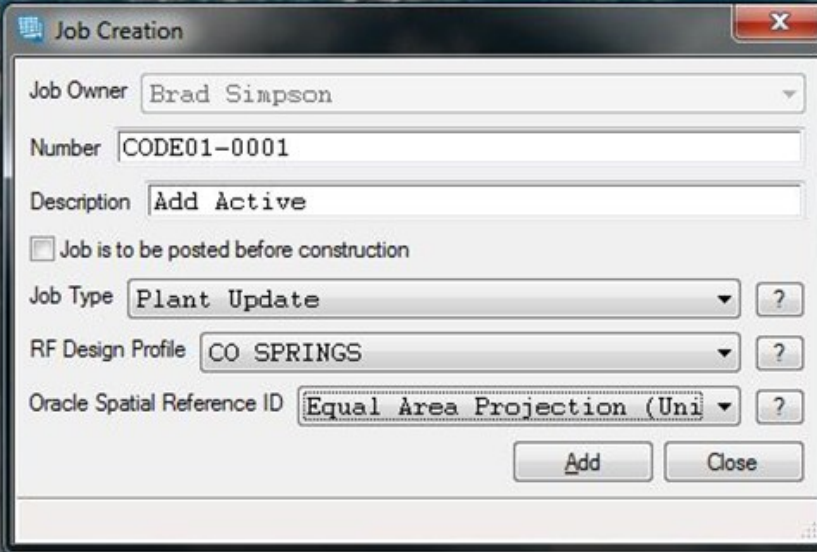
### Areas of Discussion:

- When to use Reset
- Messages
- New versus Open

### Notes:

## JOB CREATION

The spatialNET administrators or users will use this menu to create jobs for their standard spatialNET users:



The screenshot shows a 'Job Creation' dialog box with the following fields and options:

- Job Owner: Brad Simpson
- Number: CODE01-0001
- Description: Add Active
- Job is to be posted before construction
- Job Type: Plant Update
- RF Design Profile: CO SPRINGS
- Oracle Spatial Reference ID: Equal Area Projection (Uni)

Buttons: Add, Close

### Areas of Discussion:

- Job Type
- RF Design Profile
- Oracle Spatial Reference ID

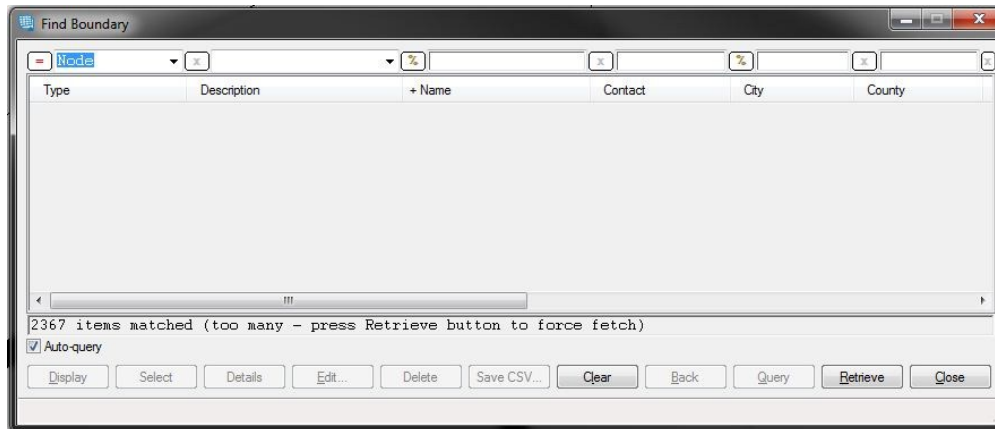
### Notes:

## NOTES

## FINDING SPATIALNET OBJECTS

## NOTES

The Map View needs be to activated before drafting or reviewing any of the entities in the database. The easiest way to trigger the map view is to search for a specific entity.



### Accessing the Find window:

- 1.
- 2.
- 3.

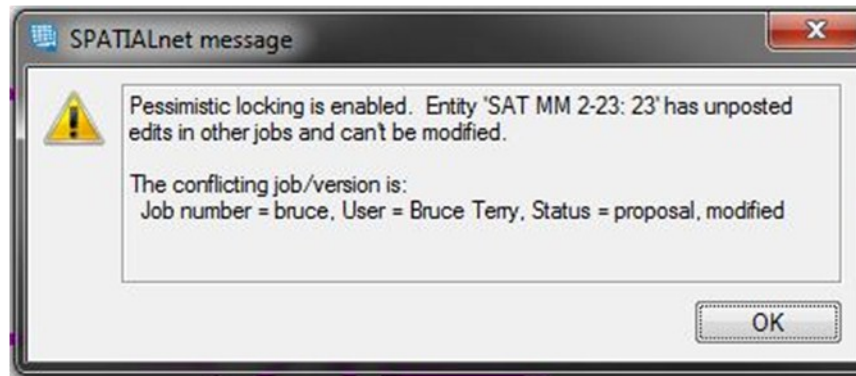
The search fields are aligned with the column below it. Click the button to the left of the appropriate search field to display its conditions menu, and select the **% Like** or **= Equal** option.

### Areas of Discussion:

- Auto-query
- Display

## PESSIMISTIC LOCKING

Pessimistic Locking prevents database corruption by allowing only one spatialNET user to make changes to an entity at any given time. Once an object has been modified in one job, any other spatialNET users who attempts to modify that object will receive an error message.



### Areas of Discussion:

- Optimistic Locking
- How to Unlock an Entity




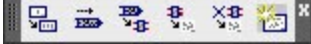
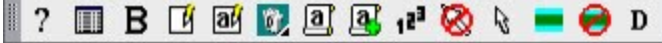




### Notes:

## NOTES

# SCREEN LAYOUT AND TOOLBAR SETUP

## NOTES

By default, spatialNET allows users to select and place toolbars in different locations. Simply drag the toolbar to the desired location within spatialNET. There are sixteen different toolbars that are used in spatialNET.

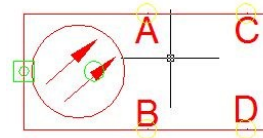
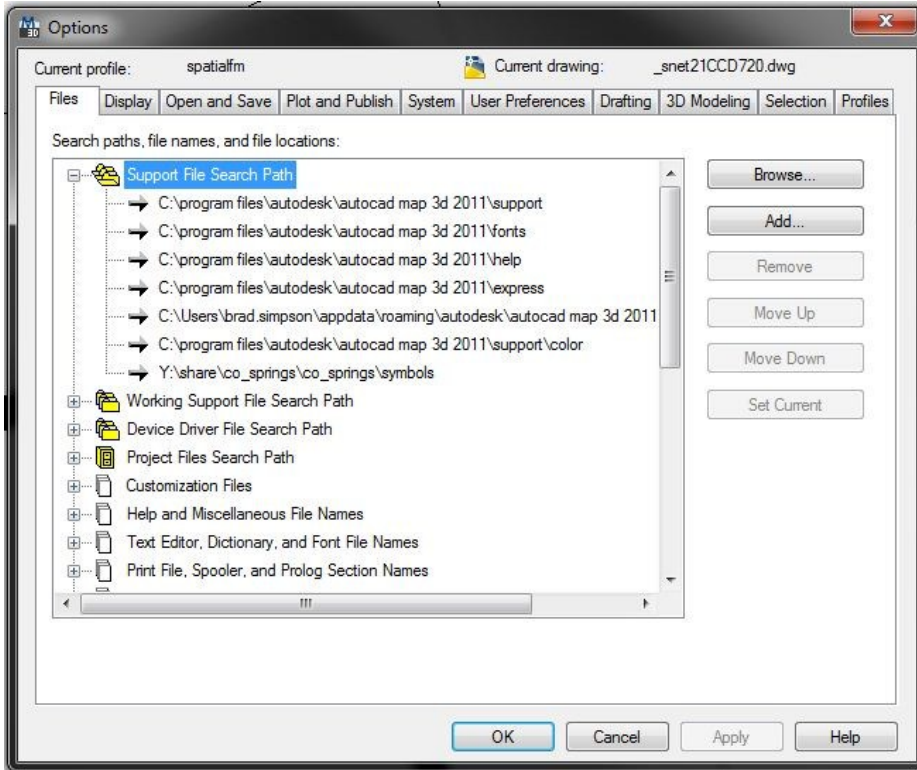
Add ISP	
Construction	
Copper	
Delete	
Detail Drawing	
Fiber	
General	
Landbase	
MDU Drawings	
Network	
Rack Elevation	
RF	
Strand	
Trace	
Trench	
View	

**Notes:**

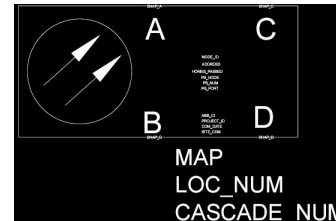
# SYMBOL SEARCH PATHS

## NOTES

spatialNET keeps a library of AutoCAD graphics that are referenced in the Data Dictionary for each object type. This is used to provide a visual display in AutoCAD of the entity from spatialNET and the Oracle Spatial database.



RF Node as it appears in spatialNET.



RF Node as an AutoCAD symbol block.

If the path location or the symbol block is missing, spatialNET users will see the following symbol:

Missing symbol

### Accessing the Symbol Search Paths:

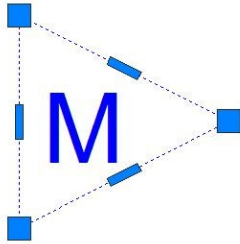
- 1.
- 2.
- 3.

# AUTOCAD OBJECTS

## NOTES

spatialNET supports AutoCAD objects and also spatialNET entities. There are some major differences.

### AutoCAD Objects



---

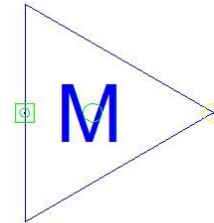
#### Areas of Discussion:

- Grips
- Oracle Data
- Removing

---

#### Notes:

### spatialNET Entities



---

#### Areas of Discussion:

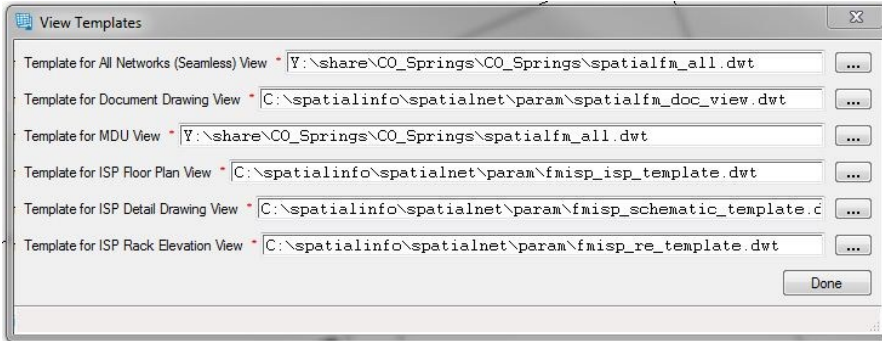
- Grips
- Oracle Data
- Removing

---

#### Notes:

# VIEW TEMPLATES

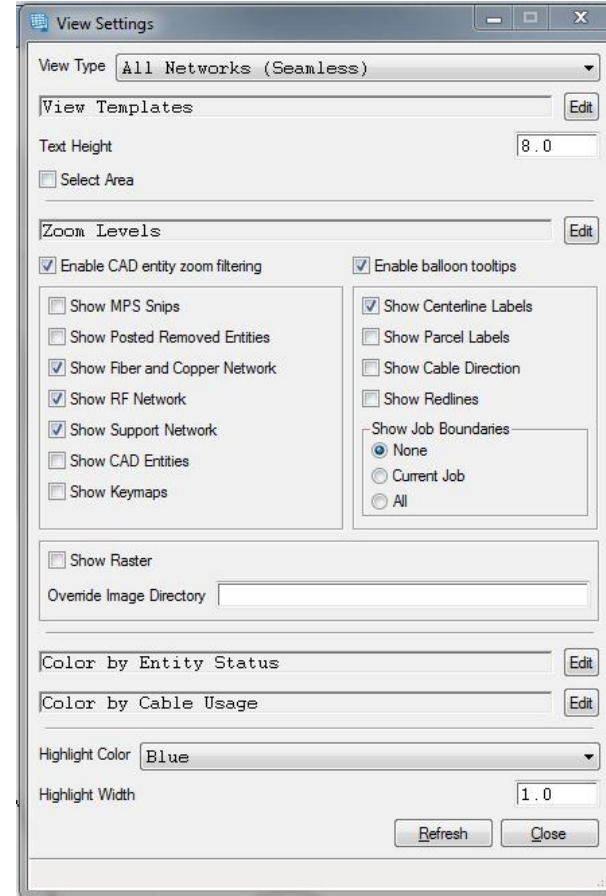
Along with the different symbol blocks associated to different entities, spatialNET entities rely on the different AutoCAD layers. These are controlled by the templates for the schema. This is what provides the color of the entity or what line style to use.



## Accessing the View Templates:

- 1.
- 2.
- 3.

## Notes:



# NOTES

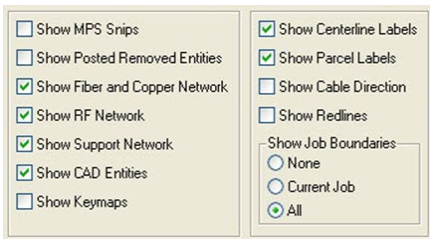
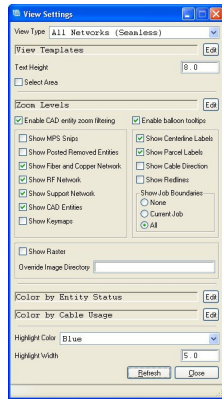
# VIEW SETTINGS, AUTOCAD LAYERS AND AUTOCAD OBJECTS

## NOTES

There are three areas which control object visibility layers inside of spatialNET:

1

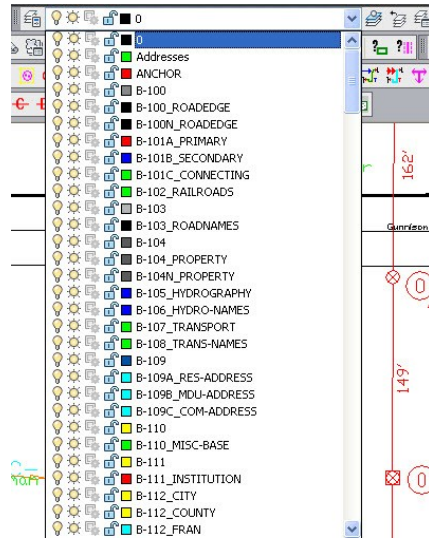
### View Settings



Notes:

2

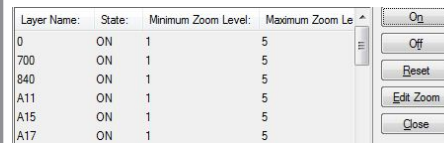
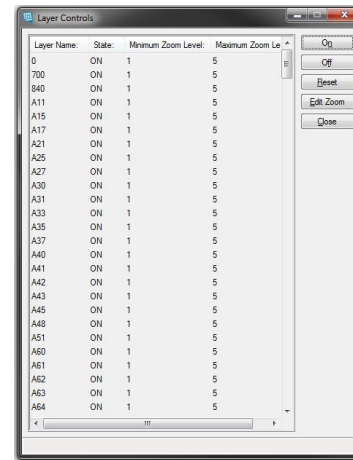
### AutoCAD Layer Tool



Notes:

3

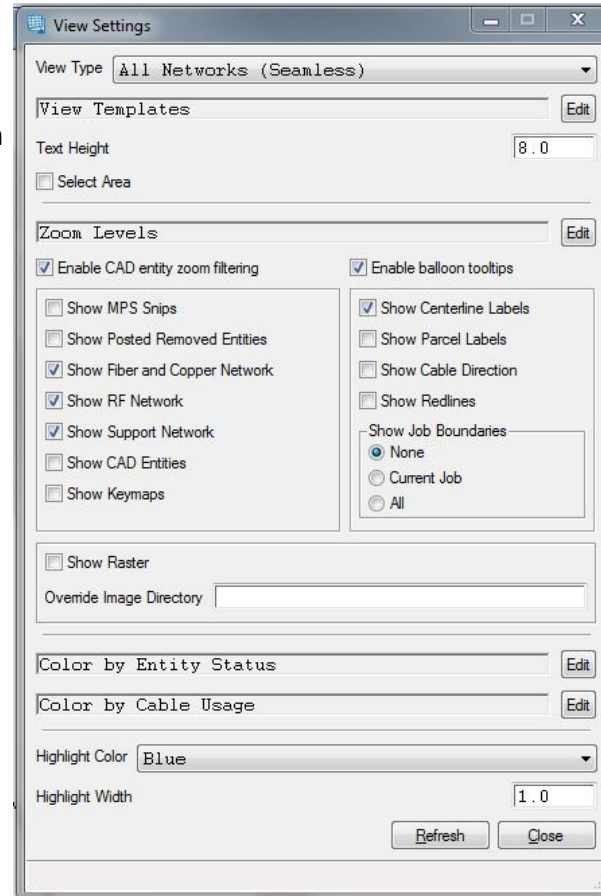
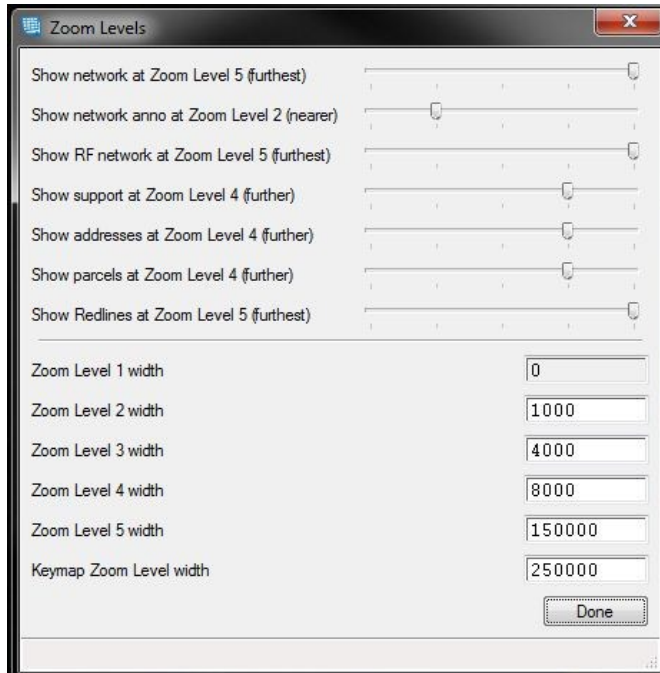
### CAD Entity Zoom Filtering



Notes:

## ZOOM LEVELS

spatialNET controls the amount of data being presented in AutoCAD by the zoom level extents. This assists with network and computer performance for the end user. There are seven areas with five basic zoom levels that can be controlled by using the zoom level settings.

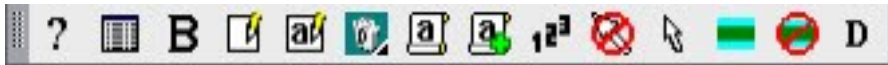


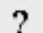







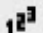





## NOTES

Notes:

## GENERAL TOOLBAR FUNCTIONS

## NOTES



Function	Use
 Current Selection Panel	Allows for editing of different attributes and more importantly, refreshing the session.
 Details of Selected Entity	Displays the attributes of the entity.
 Browse Selected Entity	Additional way of displaying the entity attributes.
 Edit Selected Entity	Change the attributes of the entity.
 Edit Selected Annotation	Change the annotation for the entity.
 Delete Selected Entity	Deletes spatialNET entities.
 Annotate Selected Entity	Adds an annotation for the entity if defined in the dictionary.
 Partially Annotate Selected Entity	Adds a partial annotation of the entity if defined in the dictionary.
 Renumber Selected Entity	Renumbers entities like addresses with different number sets.
 Clear Selection	Deselect the current selected entity or entities.
 Toggle Selection Mode	Change from single to multiple entity selection modes.
 Highlight Selected Entity	Highlight the selected entity for future reference.
 Clear Highlight	Clears highlights on any entity
 Data Dictionary Tool	Used to access debug and script add-on functions.

**Notes:**

**LEARNING MOMENTS**

What are your top three learning moments from this discussion? Why?

[Empty rounded rectangular box for learning moment]

Why?

[Empty rounded rectangular box for learning moment]

Why?

[Empty rounded rectangular box for learning moment]

Why?

Which topics in this training do you think will be the most challenging to apply?

---

---

What will you do differently as a result of this training?

---

---