

SPATIALTM*net*

Release 4.0

Installer's Guide

Proprietary Notice

This Software and Related Documentation are proprietary to and the copyright of SPATIALinfo Pty Limited.
Copyright (c) 1998 - 2007 SPATIALinfo Pty Limited
Level 14, 459 Little Collins Street
Melbourne, VIC 3000
Australia
A.B.N. 65 071 977 921
All rights reserved.

Restricted Rights Legend: Use, duplication or disclosure by the US Government is subject to restrictions as set forth in FAR and DFAR concerning the use of commercial computer software, documentation and technical data as applicable, including FAR12.212 and DFAR 227.7202.

This document is provided under license from SPATIALinfo Pty Limited (SPATIALinfo). This document is, and shall remain, the exclusive property of SPATIALinfo. Its use is governed by the terms of the applicable license agreement. Any copying of this document, or disclosure to third parties, except as permitted in the applicable license agreement, is expressly prohibited.

The information contained in this document and software functions described are subject to change without notice and should not be construed as a commitment by SPATIALinfo. SPATIALinfo assumes no responsibility for any errors or omissions that may appear in this document.

Trademark Acknowledgement

AutoCAD™ and AutoCAD Map ® are trademarks of Autodesk Inc.

Microsoft®, Windows XP ® and Windows 2000 ® are registered trademarks of Microsoft Corporation.

Oracle® is a registered trademark of Oracle Corporation.

Intel® is a registered trademark of Intel corporation.

Powerco, Spatial Data Manager, SPATIALnet and SDM are trademarks of SPATIALinfo Pty. Ltd.

Issue 1.0	First edition for SPATIALnet 2.2	22 Jun 2001
Issue 2.0	First edition for SPATIALnet 2.2.1	16 Aug 2001
Issue 2.2	First edition for SPATIALnet 2.2.2	15 Feb 2002
	Re-issued for SPATIALnet 2.3.1	16 Jul 2003
Issue 2.4	First edition for SPATIALnet 3.0	27 Oct 2003
Issue 2.5	Issued for SPATIALnet 3.0.2	17 Mar 2004
	Re-issued for SPATIALnet 3.0.5	02 Sep 2004
	Re-issued for SPATIALnet 3.1	17 Mar 2005
Issue 2.6	Issued for SPATIALnet 4.0	4 Oct 2007

Preface

SPATIALnet Installer's Guide

The *SPATIALnet Installer's Guide* provides you with supplementary information needed as part of the installation procedure for SPATIALnet 4.0.

Scope

This document describes the process for installing SPATIALnet. It does not provide a detailed discussion on related topics, such as the creation of SDM / SPATIALnet data dictionaries and the installation of AutoCAD Map. These subjects are covered in other documents.

Related documentation

Related documents in the SPATIALnet documentation series are:

SPATIALnet System Administrator's Manual

SPATIALnet Release Notes

Also of interest are the manuals in the SDM documentation series. Please refer to the *SDM 4.3.4.3 Release Notes* for a comprehensive list of the documentation available for this product.

Conventions used in this manual

Warnings and other important information are shown in a **bold** typeface. Menu commands and the names of buttons also appear in this typeface.

Angled brackets shown inside an environment variable indicate a full or partial path name that is to be supplied by the reader.

Square brackets indicate an optional component. For example, the extension in `setup[.exe]` may or may not be visible, depending on the configuration of Windows Explorer.

Definitions and Acronyms

The following acronyms appear throughout this manual.

Acronym	Definition
RDBMS	Relational Database Management System
SDM	Spatial Data Manager

Who should use this manual?

This manual is intended for System Administrators and System Integrators of *SPATIALnet* only. For the purposes of clarity, the person performing the install procedure will be known as the *install creator* throughout this document.

Prerequisite knowledge

No special knowledge is required other than a basic understanding of the procedures involved in installing an application under Windows 2000 or Windows XP.

Comments and suggestions

We welcome all comments on the software and documentation, and are very interested in suggestions, which would help us to enhance the *SPATIALnet* product and its usefulness to you. Please note down your comments and suggestions and send them to your local distributor of *SPATIALinfo* products.

Contents

Chapter	Page
1 Overview	1
Introduction	1
2 SPATIALnet Installation	2
Steps to Follow Prior to Installation	2
Installing from the Distribution Media	2
3 Appendix A – Troubleshooting	10

Chapter 1

Overview

Introduction

The full process of setting up a SPATIALnet configuration is straightforward but requires technical competence and familiarity with both the target operating system and RDBMS.

NOTE: Please refer to the SPATIALnet Release Notes for information regarding hardware and software platforms that are supported by this product.

The following steps are required to install the sample SPATIALnet configuration:

- 1 Obtain a SPATIALnet licence key from SPATIALinfo.
- 2 Install the SPATIALnet Access Manager.
- 3 Create a SPATIALnet database.
- 4 If the database is to use Oracle 9i Locator/Spatial (or later), install the Oracle client tools.
- 5 Install a supported version of AutoCAD or AutoCAD Map.
- 6 If not installing for the first time, uninstall the previous SPATIALnet installation.
- 7 Install SPATIALnet software from the distribution media.
- 8 Configure the SPATIALnet Access Manager files if necessary to suit your installation.
- 9 Configure and test the SPATIALnet database connection, customizing the SPATIALnet “.ini” files to suit your installation.
- 10 Verify the installation.
- 11 Create SPATIALnet users.

Steps 1 – 4 are covered in the *SPATIALnet System Administrator's Manual*.

Step 5 should be carried out using the documentation provided with the AutoCAD or AutoCAD Map software you will be running (supplied separately).

Steps 6 and 7 are covered in this manual.

Steps 8 – 11 are covered in the *SPATIALnet System Administrator's Manual*.

Chapter 2

SPATIALnet Installation

Steps to Follow Prior to Installation

NOTE: It is important that you read and follow the steps described in this section before installing **SPATIALnet**. Failure to do so may lead to a corrupted environment on the target system. For a list of client requirements (such as compatible operating systems), please consult the *SPATIALnet Release Notes*.

If a previous version of **SPATIALnet** already exists on the target system, it must be uninstalled first before proceeding with the new installation. This may be achieved by executing the Uninstall program (installed with the previous version of **SPATIALnet**) via the Windows **Start > Programs** menu.

You must be logged onto the system as an Administrator to carry out the Uninstall and to proceed with the new installation.

Installing from the Distribution Media

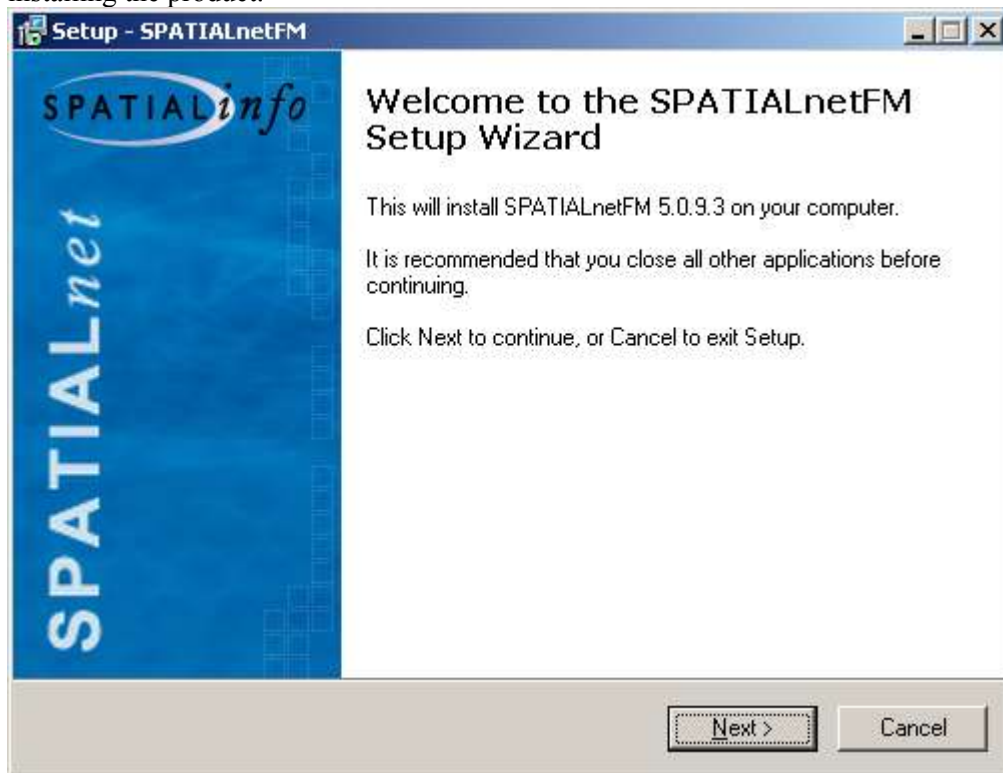
NOTE: The following steps assume that **SPATIALnet** is installed from a CD-ROM.

On Windows-based clients, **SPATIALnet** is implemented as an application. Depending upon the configuration you install, one or more type of **SPATIALnet** session will be accessible via the Windows **Start > Programs** menu (and as desktop shortcuts) on the target client(s).

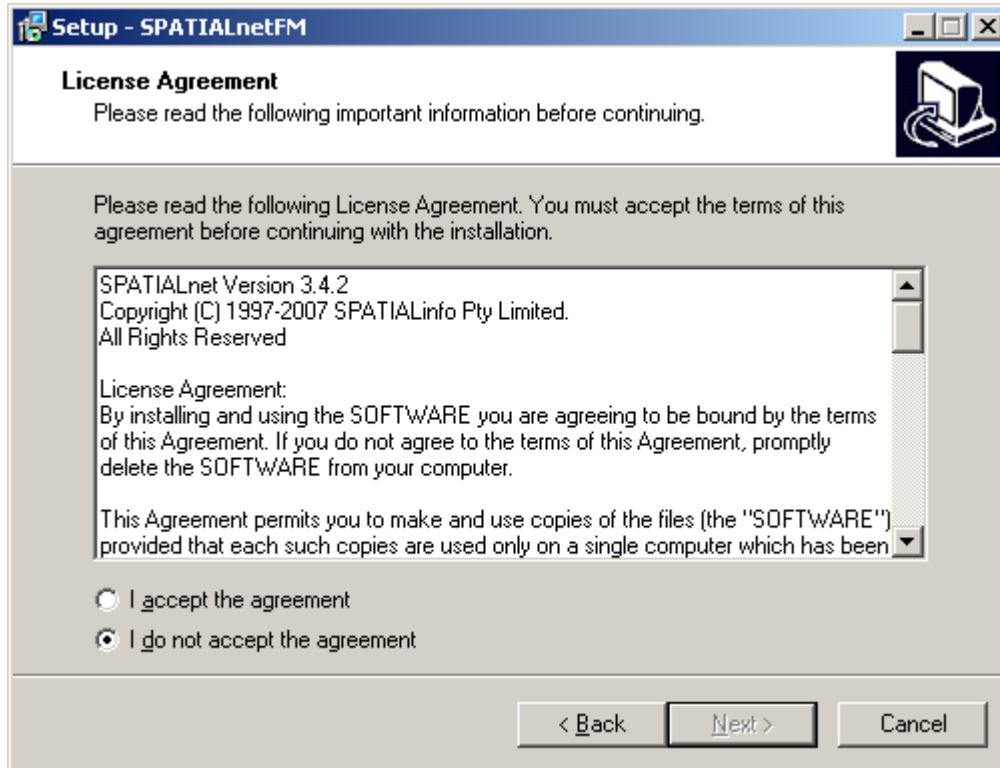
To install **SPATIALnet** on a Windows-based client:

- Place the **SPATIALnet** disk into the CD-ROM drive on the target system for installation.
- To run the **SPATIALnet** installer: via Windows Explorer open the folder “My Computer/CD/Installer” and double click on setup[.exe] (the suffix “.exe” may or may not be visible depending how you have configured Windows Explorer).

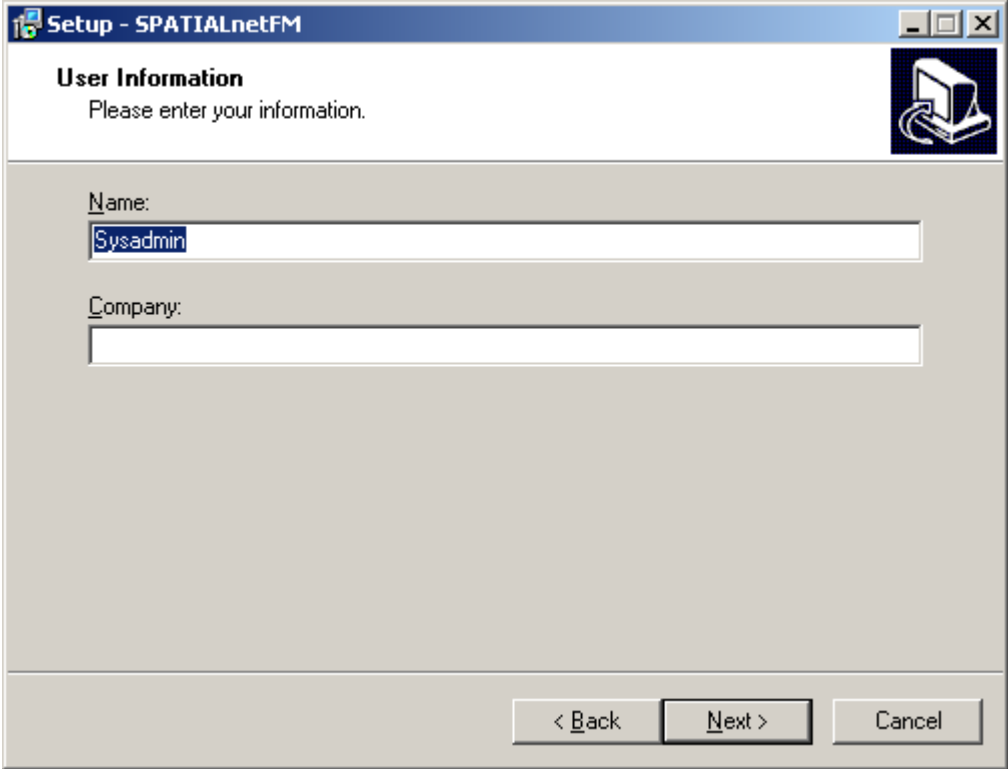
- A series of installation panels will be presented on the screen. The first welcomes you to the installer and shows general information about the product being installed. Click **Next** to continue with the installation. **Cancel** can be clicked at any time throughout the installer to exit the installer without installing the product.



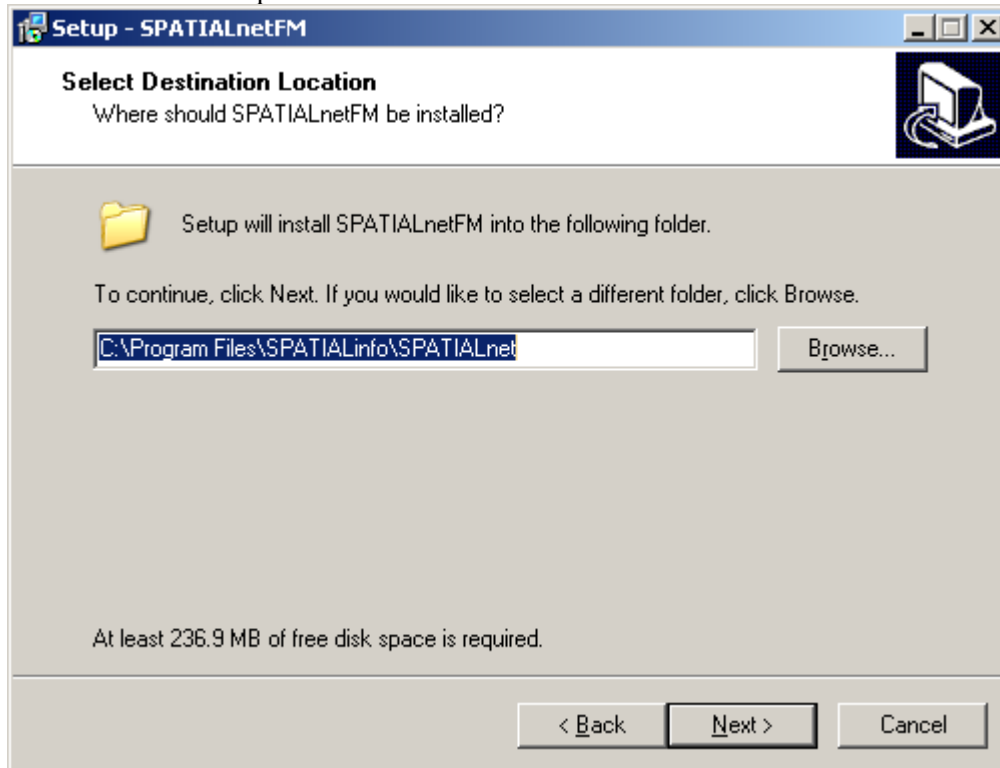
- ❑ The first relates to the Licensing Agreement into which you are entering. To accept this agreement, check the “I accept this agreement” radio button and click **Next** to continue with the installation. Otherwise click **Back**.



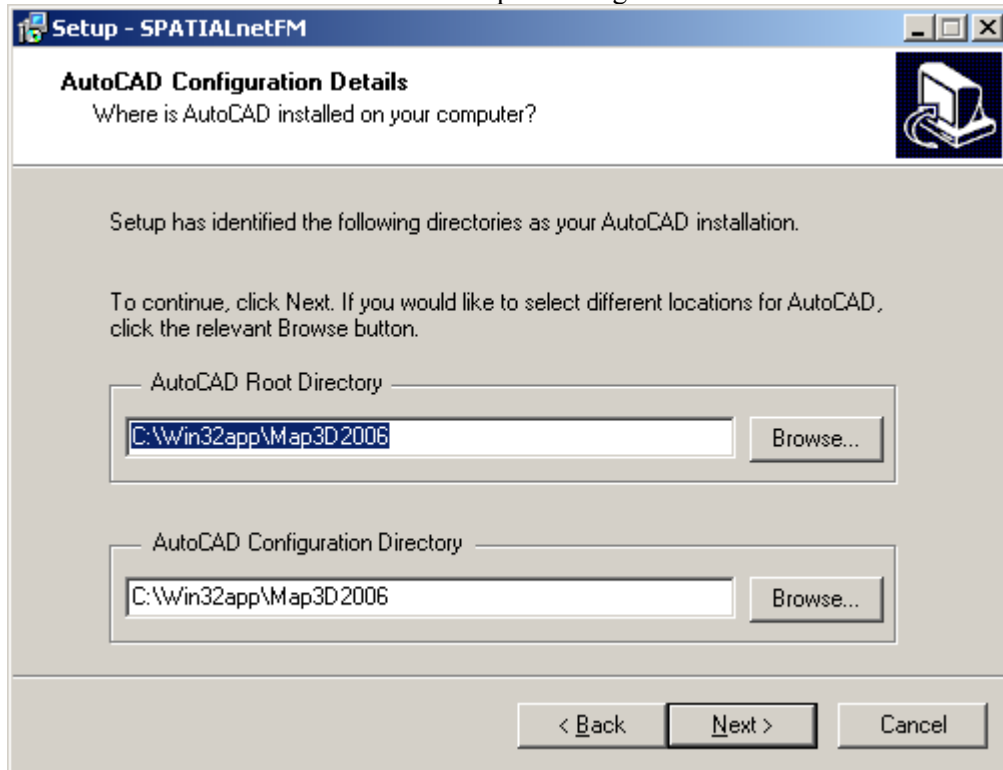
- You will then be asked to enter the user name and company for the person who will be using this installation of SPATIALnet.



- ❑ Next, you will be given the opportunity to specify a location for the SPATIALnet installation or accept the default location of `c:\program files\spatialinfo\spatialnet`. The setup program will install SPATIALnet in the specified location.

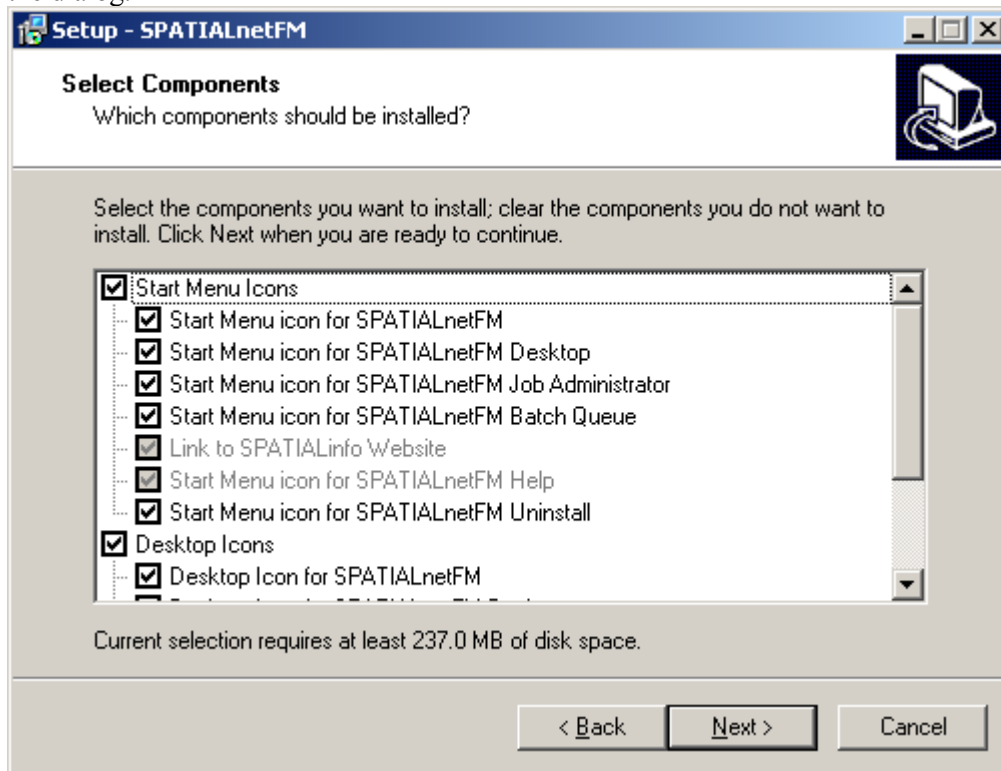


- Setup will display default locations for the root and configuration directories of your AutoCAD [Map] installation. If default directories were not chosen during the installation of AutoCAD [Map] on the target system, these locations will need to be modified before proceeding with the installation.

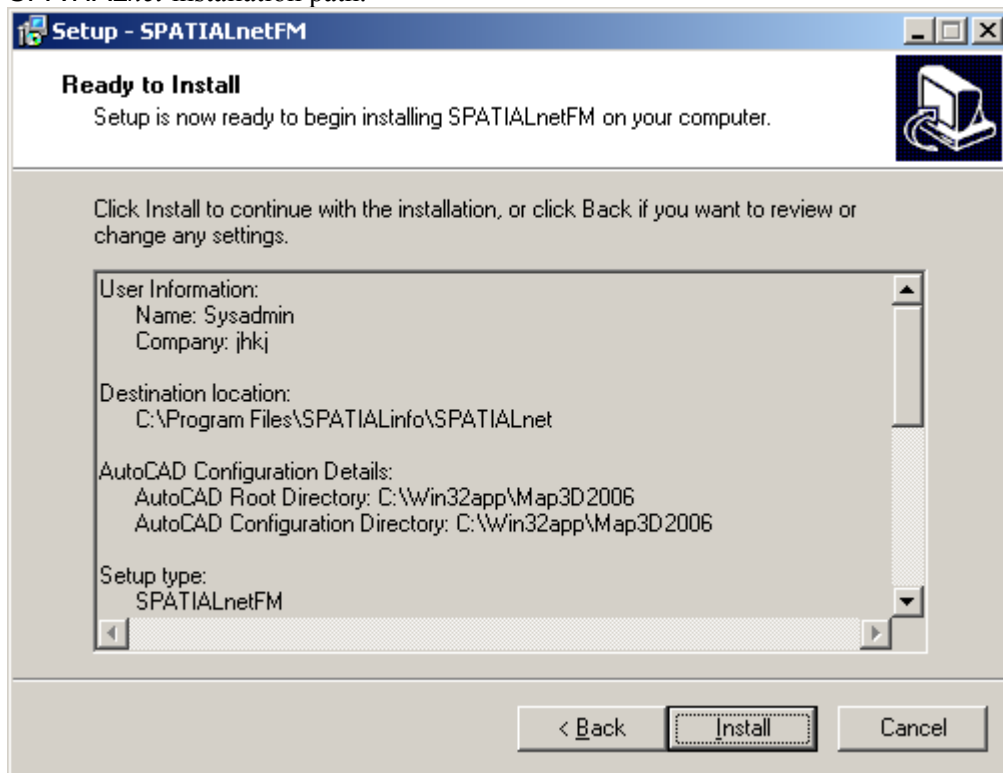


Note: *The next step is only relevant if you are installing the SPATIALnetFM model.*

- ❑ You then have the option to select from a list of optional SPATIALnet components, each of which appears in the Select Components dialog, along with space requirements. The total space required appears at the bottom of the dialog.



- ❑ Before the copying process begins, a summary of your selections will be displayed, allowing you to verify the setup prior to commencement of the copy process. Once you have accepted these selections, files for the installation of SPATIALnet will be copied from the CD-ROM to the chosen SPATIALnet installation path.



- ❑ The setup program will then add shortcut icons to the desktop: one icon will be added for every selection that was chosen from the Select Components panel. Setup will also create several menu items (accessible to all users) inside the C:\Documents and Settings\All Users\start menu\programs\SPATIALnet folder of the target system.
- ❑ The installation of SPATIALnet is now complete. It is advisable to restart the system at this point by selecting the appropriate option on the final panel. This will ensure that the installation will function correctly. You may abort this operation if necessary, but it is advisable to re-boot the workstation before attempting to run SPATIALnet.

Appendix A – Troubleshooting

This appendix describes remedies to some of the problems you may encounter, as a result of the SPATIALnet installation.

Menus in my installation of SPATIALnet are not consistent with those shown in the supplied documentation. Either the SPATIALnet menu appears twice or it is the only one on the menu bar.

These two scenarios are likely if you had been running a previous release of SPATIALnet on the target system. To solve this problem, if you know the path name of the AutoCAD installation, enter the following lines at the AutoCAD command prompt during a SPATIALnet session:

```
Command:filedia 0
```

```
Command:menu <my AutoCAD Path>\support\acad.mns
```

where <my AutoCAD path> is the root directory of your AutoCAD installation on the target system.

If the path of the AutoCAD installation is not known, enter the following lines at the command prompt:

```
Command:filedia 1
```

```
Command:menu
```

and locate the acad.mns file yourself when the Open File dialog appears.

You will need to restart your SPATIALnet session following either of the above operations.

Toolbars appear corrupted or contain smiley faces.

Close the session of SPATIALnet you are running and open a Windows Explorer window. Inside the window, locate the directory where SPATIALnet has been installed and open the param subdirectory. Now highlight and delete all files in this directory with an .MNC or .MNR extension. This will force the SPATIALnet toolbars to be recompiled using the remaining menu source (.MNS) files.

How do I restore the registry settings used by SPATIALnet?

If your registry has become corrupt, you may update it, based on the most recent installation of SPATIALnet, by running the spatialnet.reg file. This file is located in the bin directory of the SPATIALnet installation.

The above technique may be used in response to a known problem in Windows. By dragging the SPATIALnet icon to the Recycle Bin and then reinstalling it, the registry entries for SPATIALnet automatically get modified to point to the location of the Recycle Bin. The suggested remedy to this situation is to run the SPATIALnet installer again. The registry should be corrected as a result - if not, run the spatialnet.reg file to correct the problem.

Index

C

checklist

 sample SPATIALnet configuration 1

D

distribution media

 CD-ROM 2

I

install creator iv